

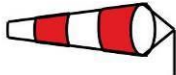
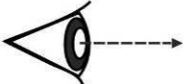
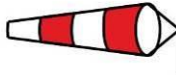
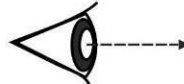





















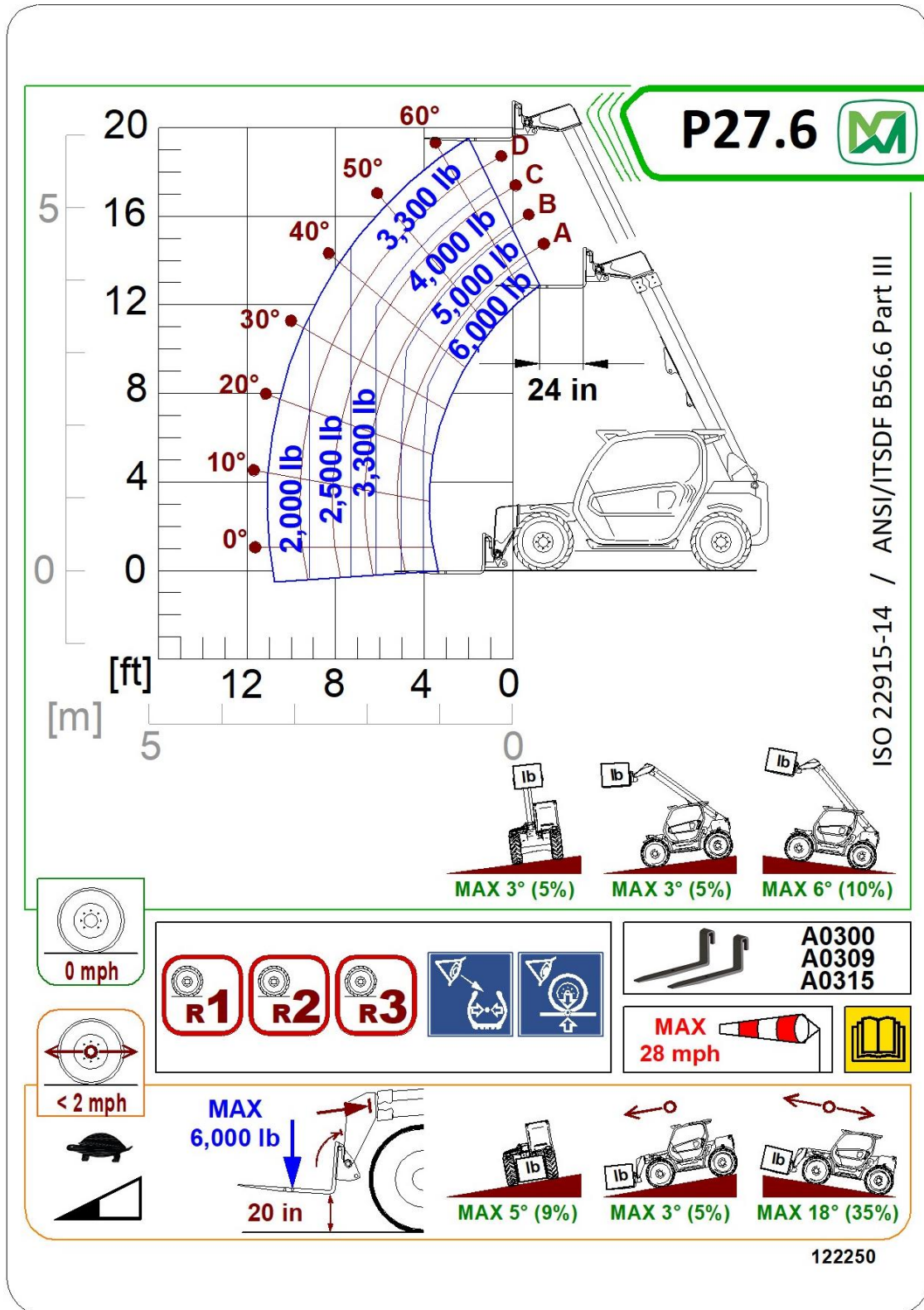


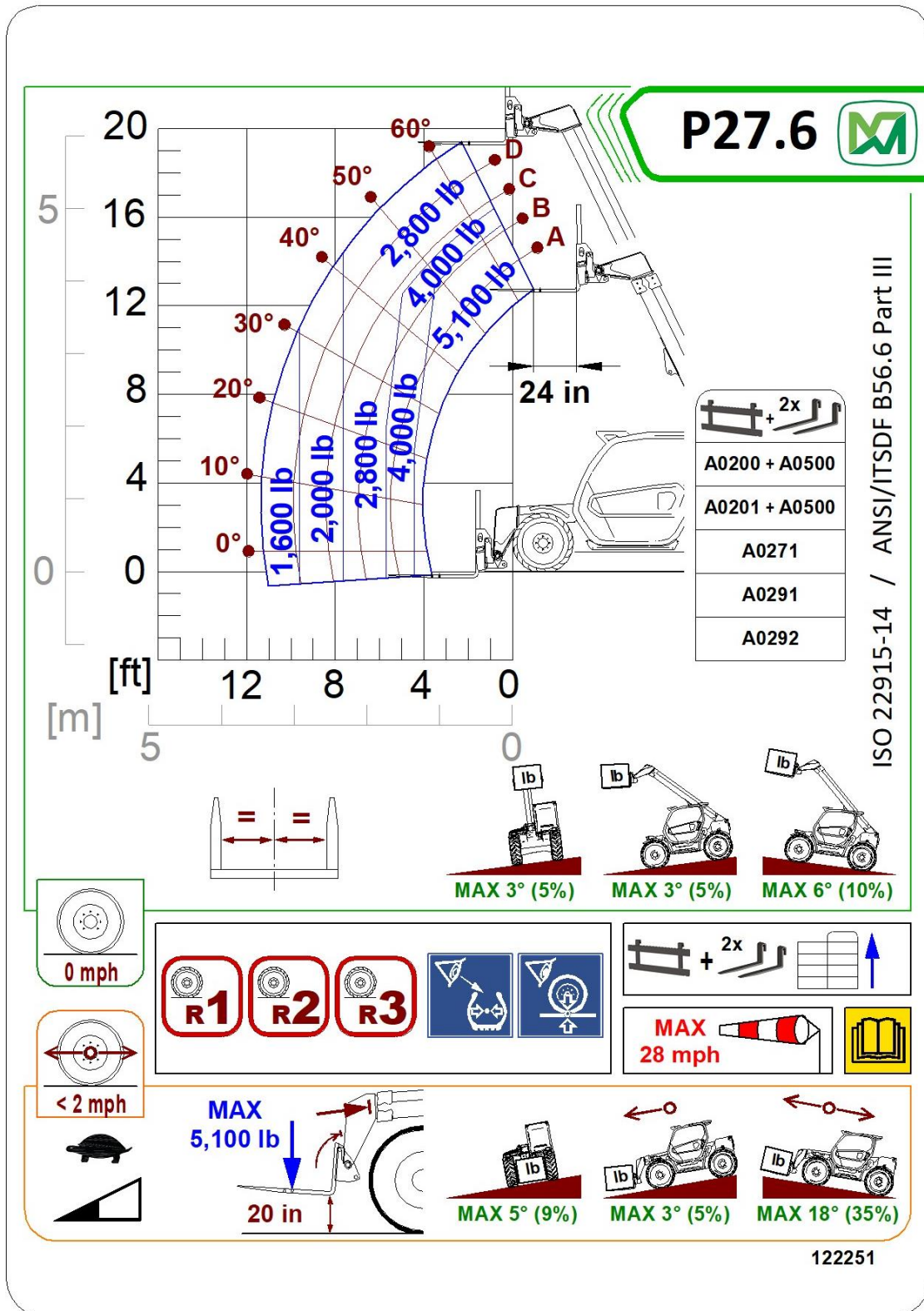
<b>BEAUFORT</b> 		 <b>MERLO</b>	
			
<b>0</b> < 1 km/h < 1 mph < 0.3 m/s		<b>7</b> 50 - 61 km/h 31 - 38 mph 13.9 - 17.1 m/s	
<b>1</b> 1.1 - 5.5 km/h 1 - 3 mph 0.3 - 1.5 m/s		<b>8</b> 62 - 74 km/h 39 - 46 mph 17.2 - 20.7 m/s	
<b>2</b> 5.6 - 11 km/h 4 - 7 mph 1.6 - 3.4 m/s		<b>9</b> 75 - 88 km/h 47 - 54 mph 20.8 - 24.4 m/s	
<b>3</b> 12 - 19 km/h 8 - 12 mph 3.5 - 5.4 m/s		<b>10</b> 89 - 102 km/h 55 - 63 mph 24.5 - 28.4 m/s	
<b>4</b> 20 - 28 km/h 13 - 17 mph 5.5 - 7.9 m/s		<b>11</b> 103 - 117 km/h 64 - 73 mph 28.5 - 32.6 m/s	
<b>5</b> 29 - 38 km/h 18 - 24 mph 8.0 - 10.7 m/s		<b>12</b> ≥ 118 km/h ≥ 74 mph ≥ 32.7 m/s	
<b>6</b> 39 - 49 km/h 25 - 30 mph 10.8 - 13.8 m/s		 <b>MAX</b>	<b>45 km/h</b> <b>28 mph</b> <b>12,5 m/s</b>

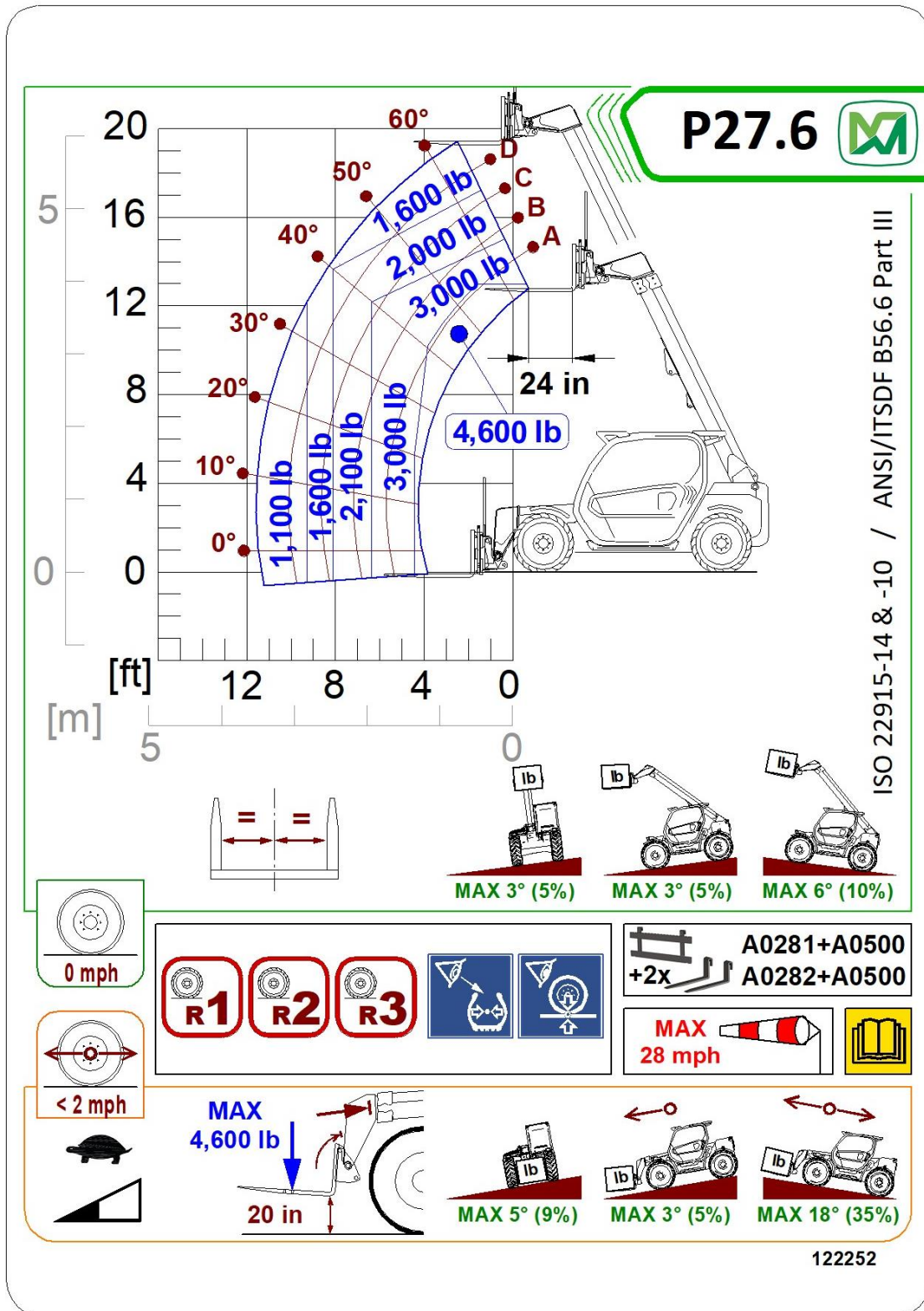
091223

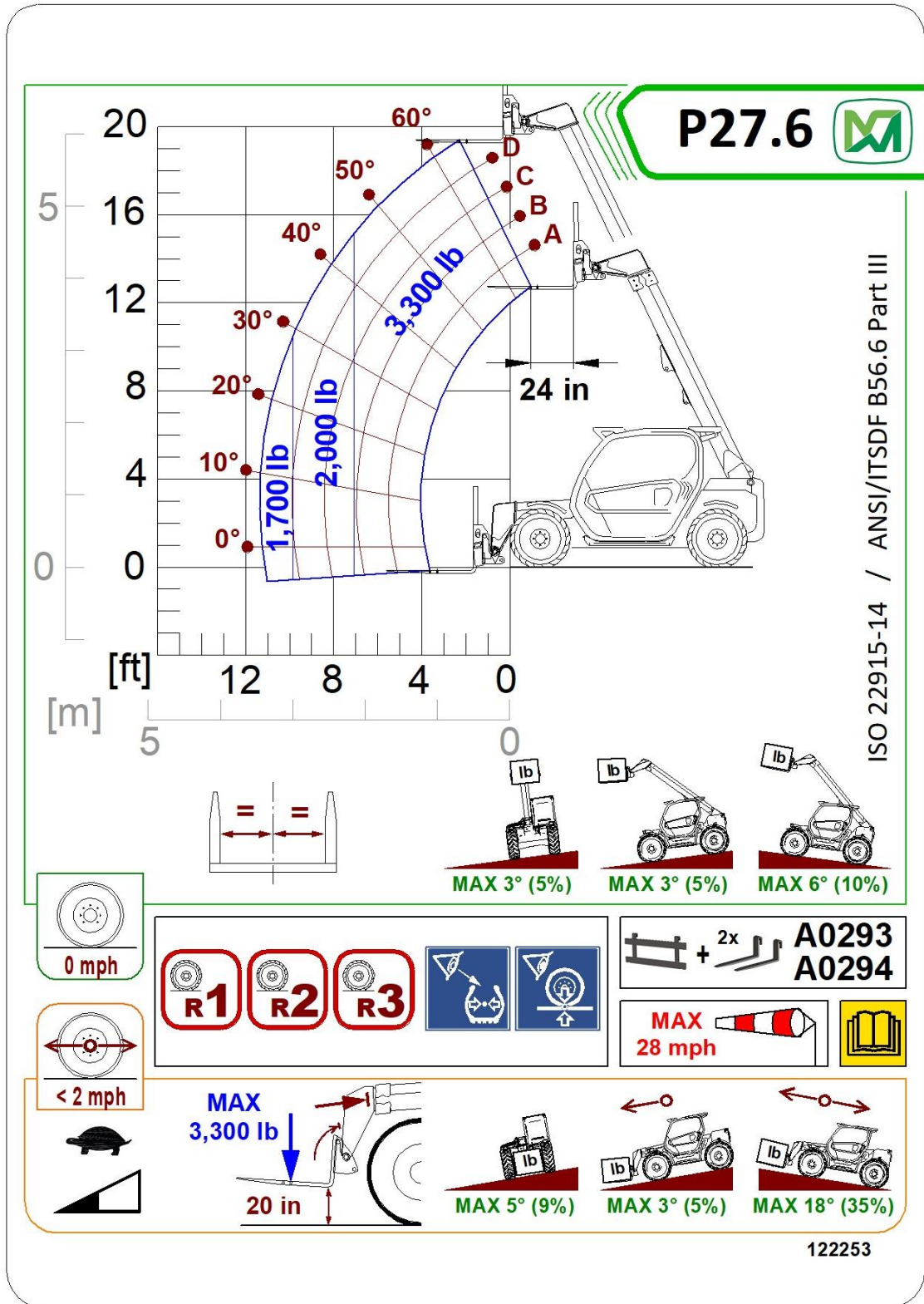
  <b>R</b>	 X 4	<b>P27.6</b>    bar - psi
	<b>12-16.5 12PR SOLIDEAL SKS HAULER</b> <b>33x15.5-16.5 10PR CAMSO SKS 511</b>	<b>4.5 - 65</b> <b>3.4 - 49</b>
	<b>300/80-15.3 141A8 TRELLEBORG T452</b> <b>12.0/75-18 12PR MITAS TR-03</b> <b>280/80-18 132A8 MICHELIN POWER CL</b>	<b>4.0 - 58</b> <b>4.0 - 58</b> <b>4.0 - 58</b>
	<b>15.0/55-17 125/137A8 TR-01 TL MITAS</b>	<b>3.7 - 54</b>

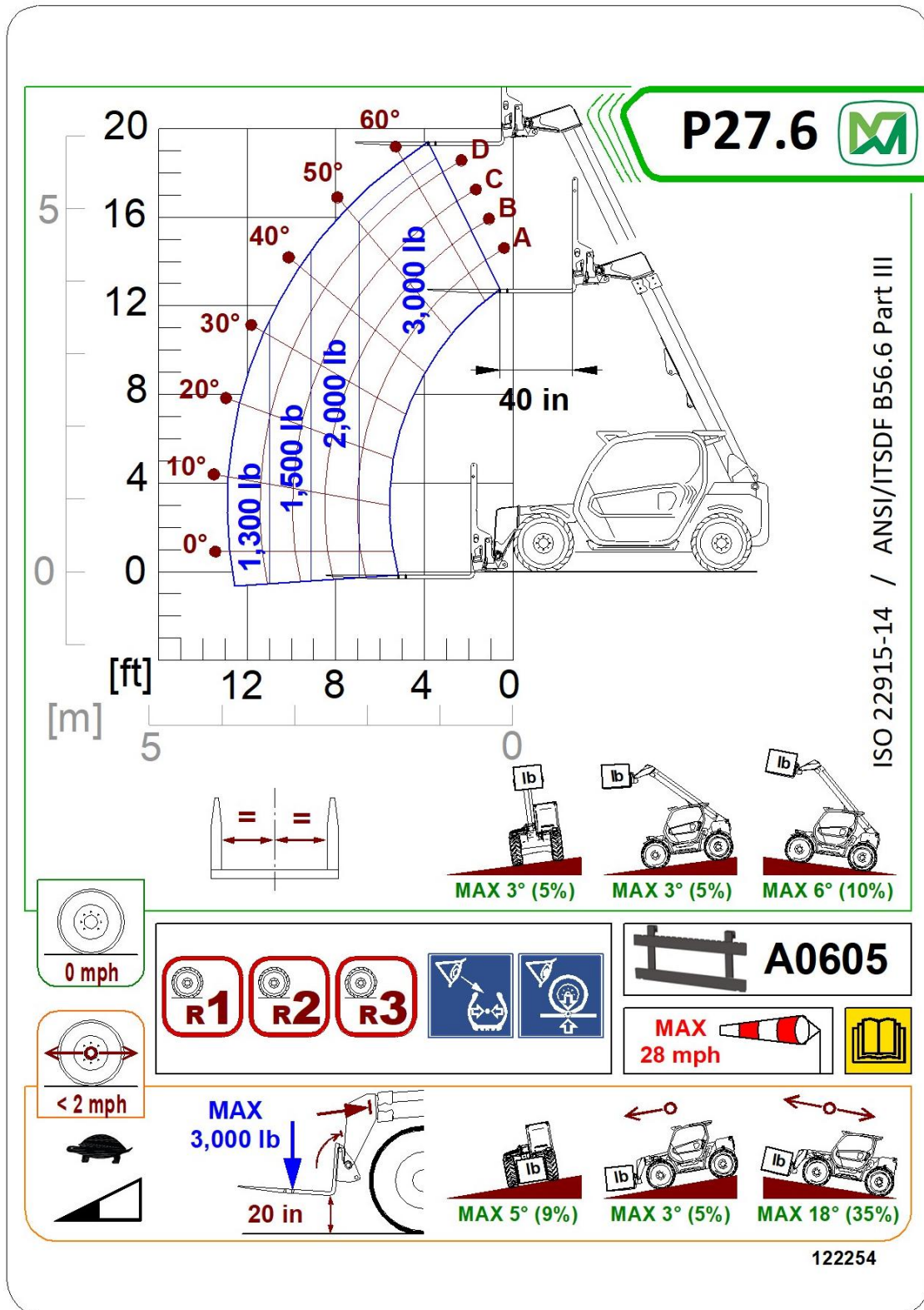
104115

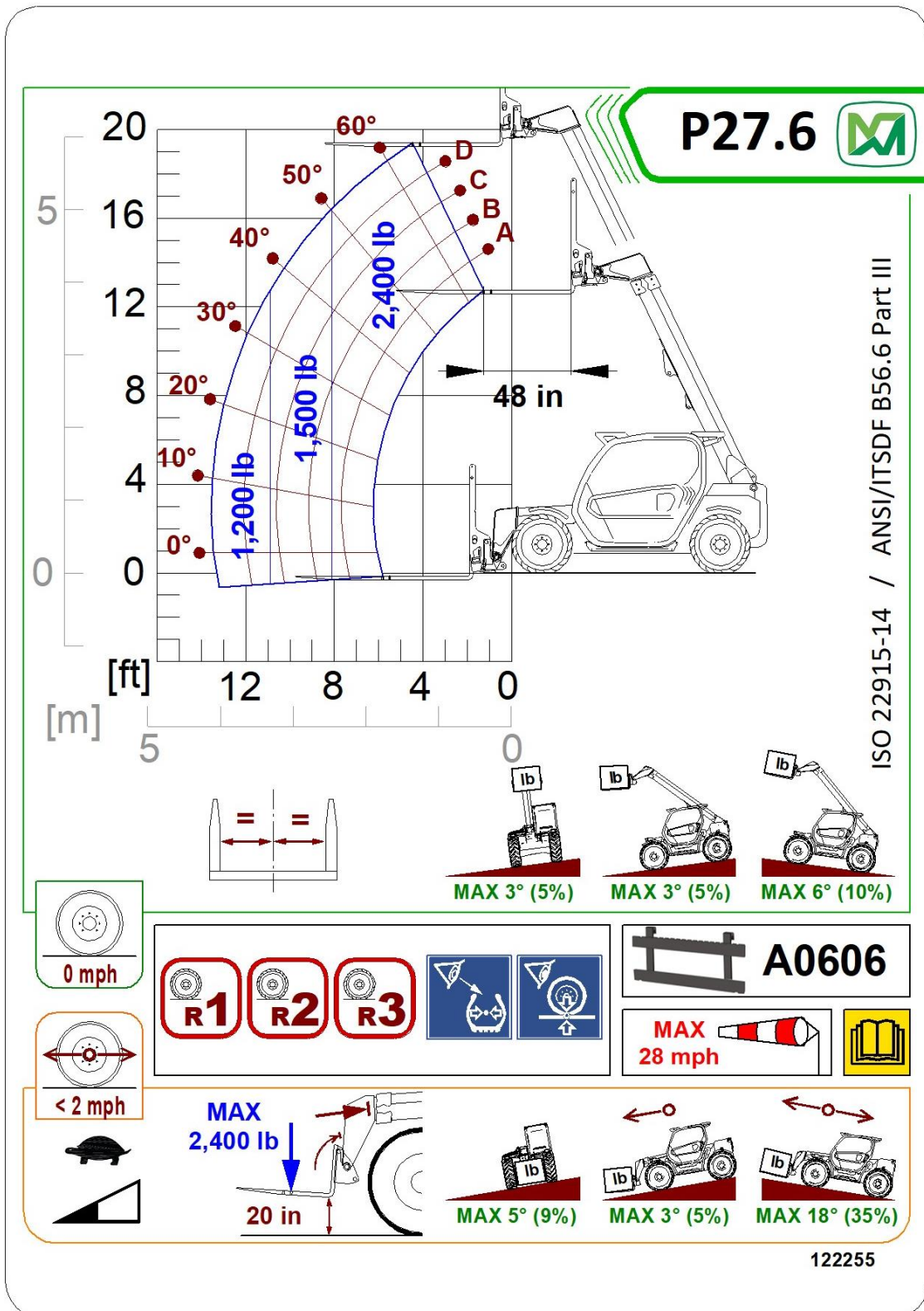






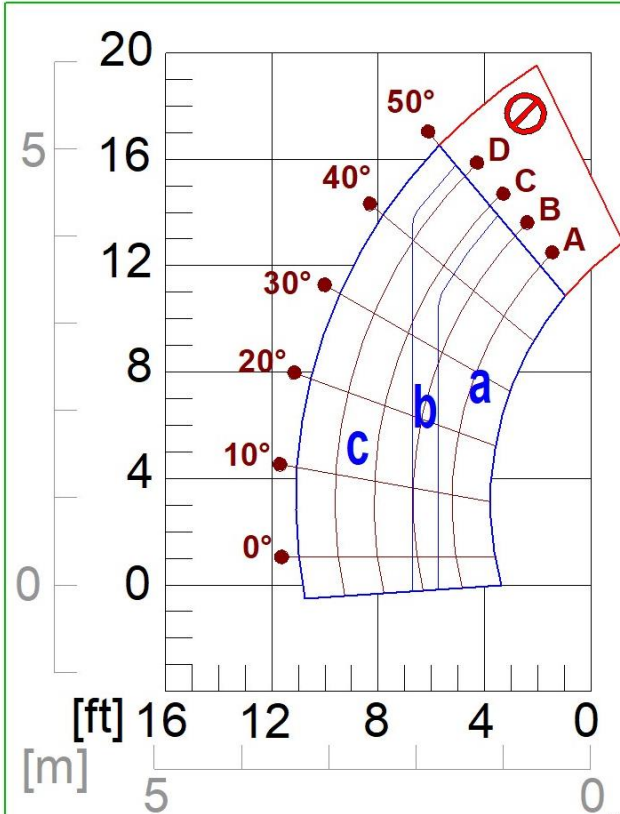








# P27.6



	<i>m</i> [lb/cu.ft]		
	140	110	55
A0699	b	b	c
A0700	a	b	c
A0713	⊘	⊘	a
A0716	⊘	⊘	b
A0730	⊘	⊘	a
A0810	a	b	c
A0836	⊘	b	c
A0841	⊘	a	b

ISO 22915-14 & -20 / ANSI/ITSDF B56.6 Part III

0 mph

< 2 mph

R1 R2 R3

MAX 28 mph

20 in

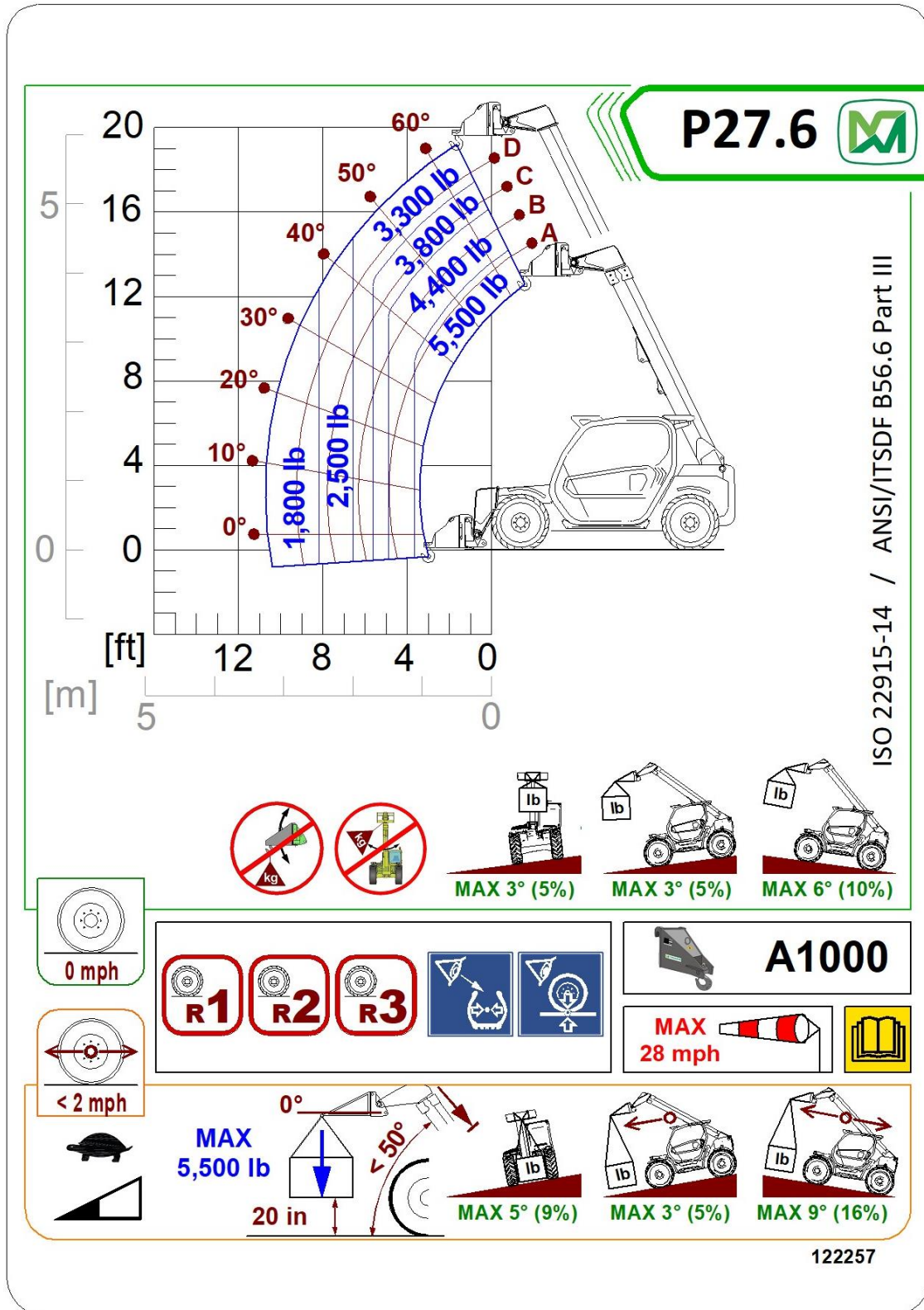
MAX m

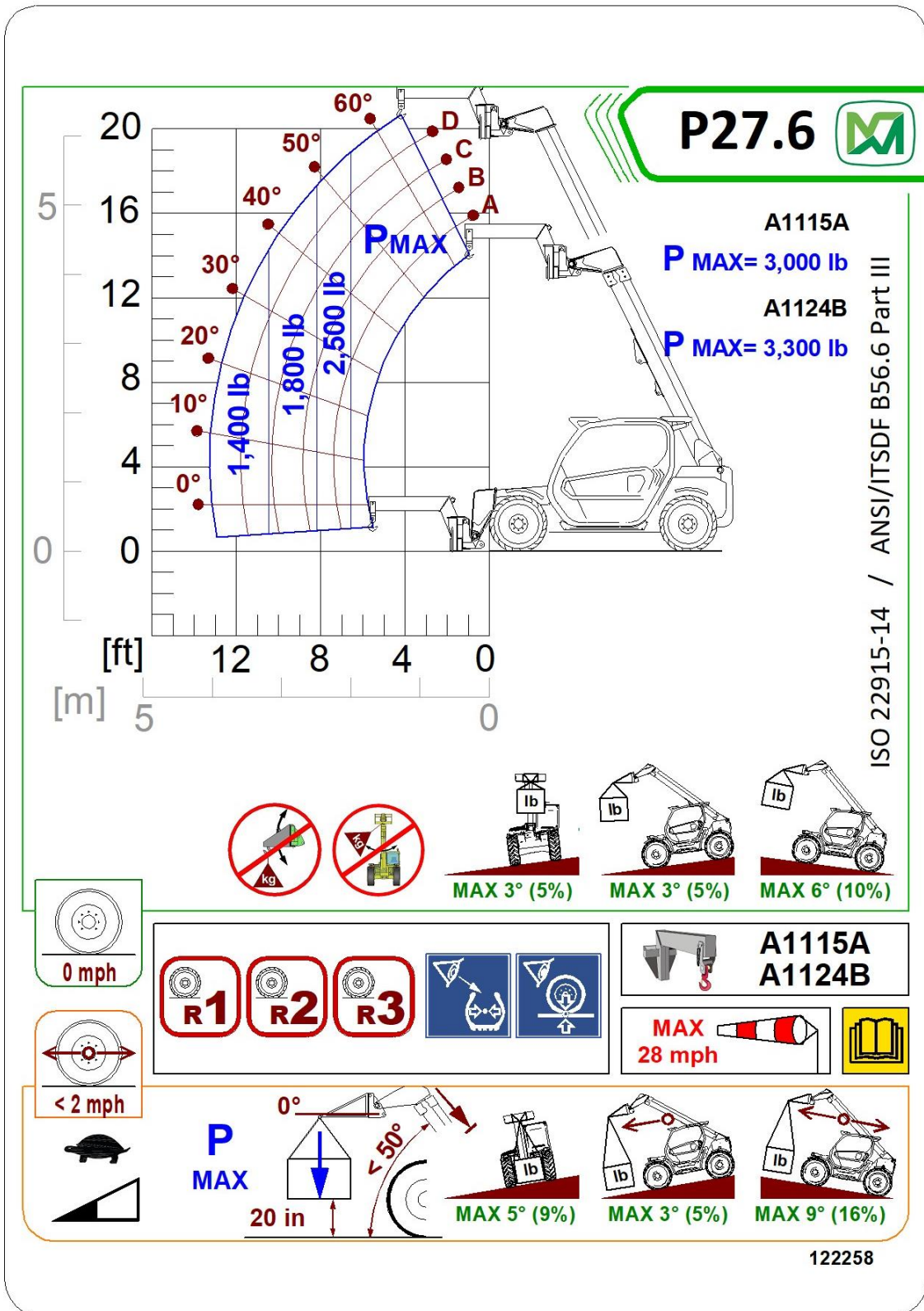
MAX 5° (9%)

MAX 3° (5%)

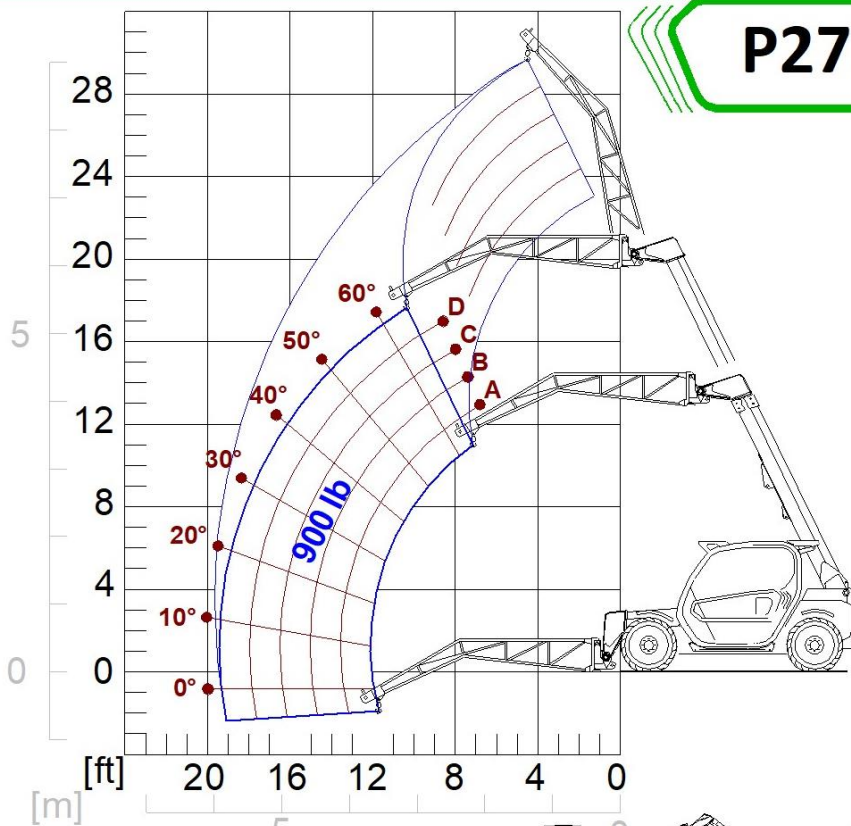
MAX 18° (35%)

122256





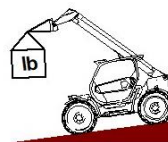
P27.6



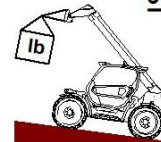
ISO 22915-14 / ANSI/ITSDF B56.6 Part III



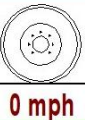
MAX 3° (5%)



MAX 3° (5%)



MAX 6° (10%)

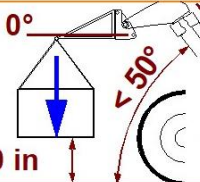


A1230A  
A1230B

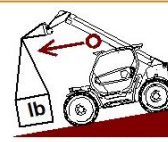
MAX 28 mph



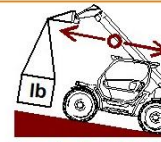
MAX 900 lb



MAX 5° (9%)



MAX 3° (5%)



MAX 9° (16%)

122259



